



# A transformer-based model for default prediction in mid-cap corporate markets

---

KAMESH KORANGI, CHRISTOPHE MUES, CRISTIÁN BRAVO

CBRAVORO@UWO.CA

@CBRAVOR

# The Banking Analytics Lab

---

One of the largest groups in the world researching analytics in banking, with a focus on credit risk.

- 3 postdoctoral researchers.
- 12 PhD students across three continents.
- A large network of collaborators all around the world.

Recognized worldwide!

- Markov et al. (2022):
  - Top 2 researcher in the area of credit scoring. Only in two lists (also in Louzada et al., 2017).
  - Two works (Bravo et al., 2013 and Verbraken et al., 2014) are now industry standards.

Visit our website!

<https://thebal.ai>

SCAN ME



# Agenda

---

Mid-caps

Problem

Relevant  
Literature

Contributions

Data  
Description

Results

Conclusion

# Mid-caps

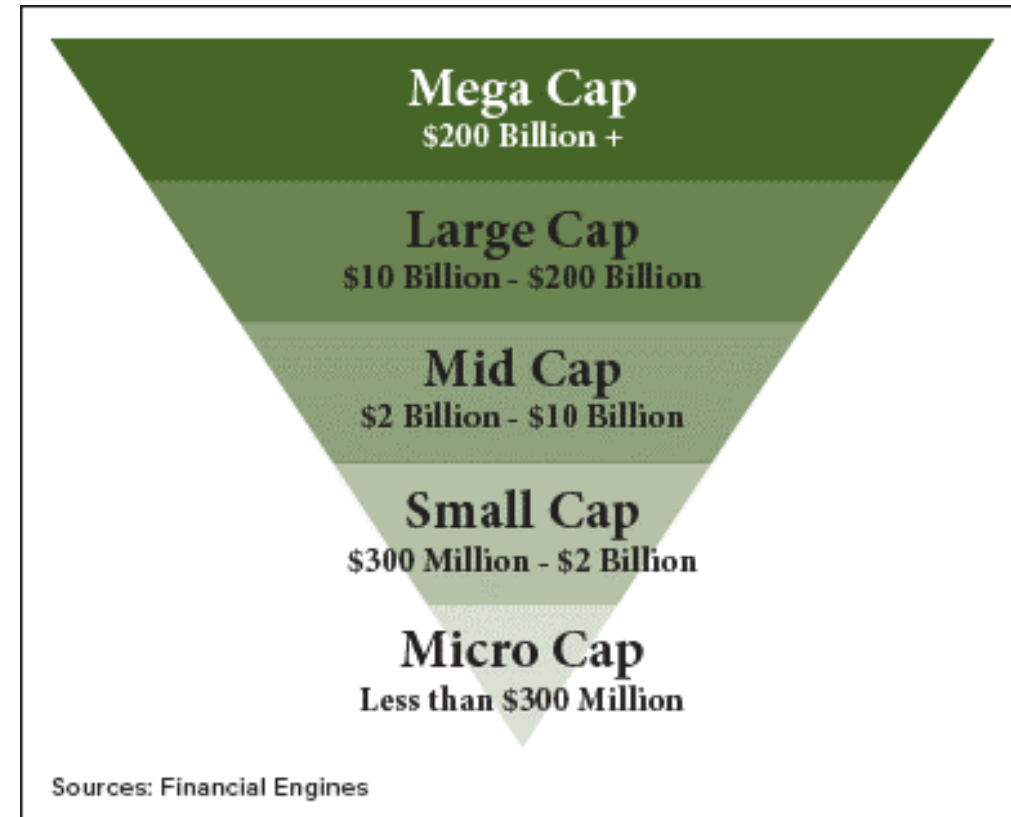
---

Mid-cap companies are publicly traded companies with less than US\$10 billion market capitalisation

Their debt has a shorter maturity period than large-caps

Typically hold a non-investment grade credit rating, implying higher credit risk

Lots of disaggregated information, more dependant on general economic conditions.



# Problem

---

## Mid-cap challenges

- Credit spreads or prices implied by the models often underestimate from what is empirically observed<sup>1</sup>, and is more pronounced for mid-caps<sup>2</sup>
- This mispricing of risk lead to unexpected losses for lenders
- Credit risk is not easily separable from market risk, especially for mid-cap companies<sup>3</sup>

## Modelling challenges

- Ability to use different kinds of data and extract relationships
- Time horizon of default prediction models<sup>4</sup>

# In the Literature...

---

Three types of credit risk models in this space – statistical models<sup>5</sup>, structural models<sup>6</sup> and reduced form models<sup>7</sup>.

Machine learning models shown to improve performance, particularly ensemble of models in default prediction<sup>8,9</sup>

Deep learning models have produced state-of-the-art results in other domains and been applied with textual data for corporates<sup>10</sup> and for SMEs<sup>11</sup> with promising results

## Our proposal

We construct an **ad-hoc transformer model**<sup>12</sup> -- state-of-the art in natural language processing - for **time series panel data with correlated outputs**

# General Aim and Paper Contributions I

---

We develop a novel approach to credit risk modelling using deep learning in midcaps

- first to propose a **transformer-encoder model for corporate default risk** modelling
- a **framework for multi-modal learning** that can combine the different data sources and allows for a differential training approach

Single combined model for term structure of default probabilities

- Probabilities are obtained at 3m, 6m, 1y, 2y and 3y **simultaneously**.

# General Aim and Paper Contributions II

---

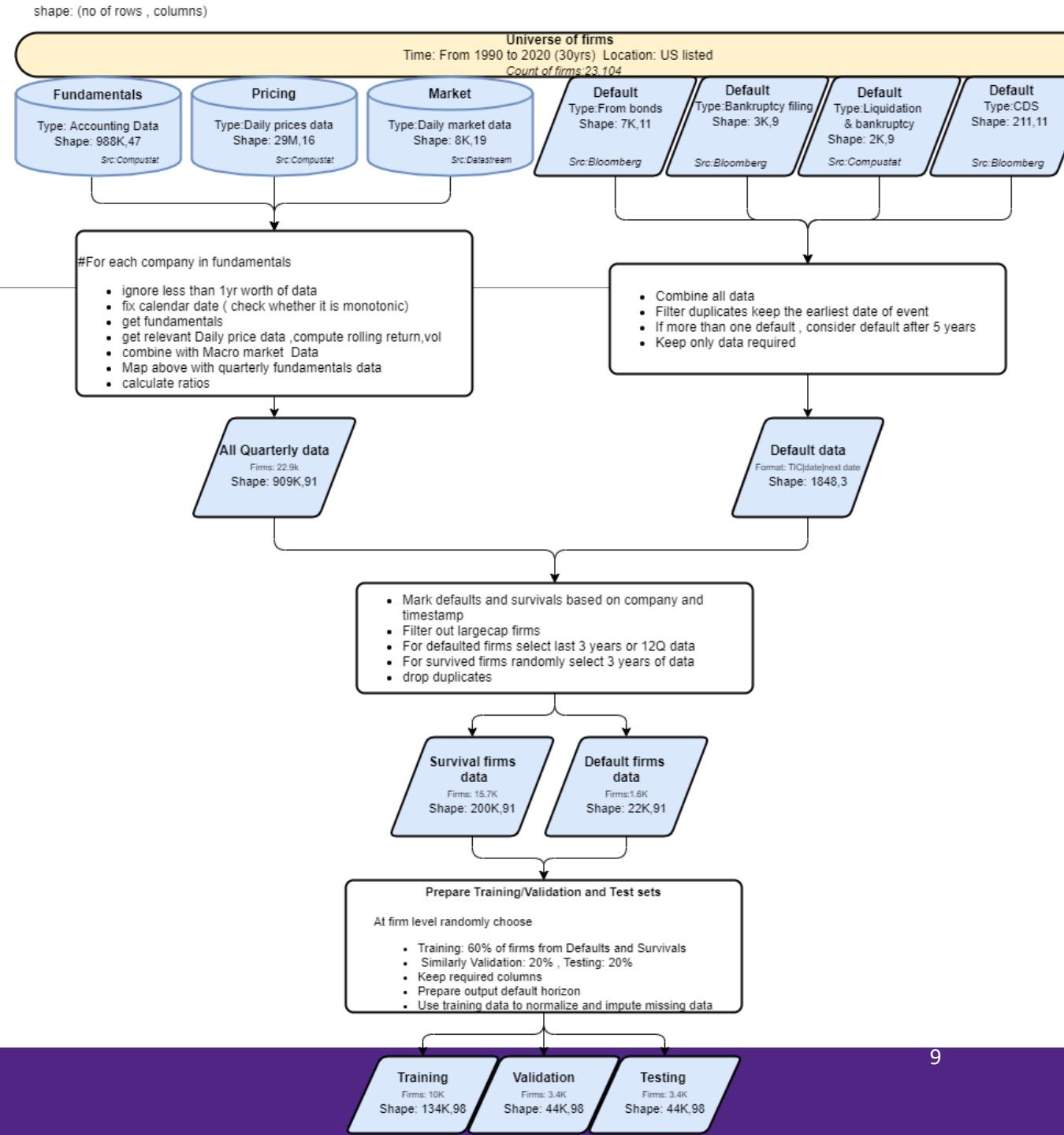
We also make the model interpretable

- Utilize **attention heatmap visualizations** to show the model learning between defaults and survivals
- Shapley values to quantify the relative importance of **groups of variables** to answer
  - Which data sources are important
  - Which time period is important

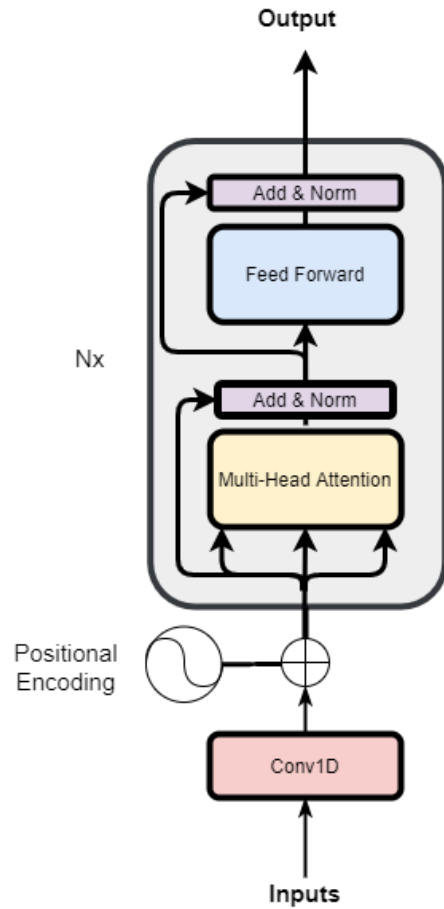


# Data description

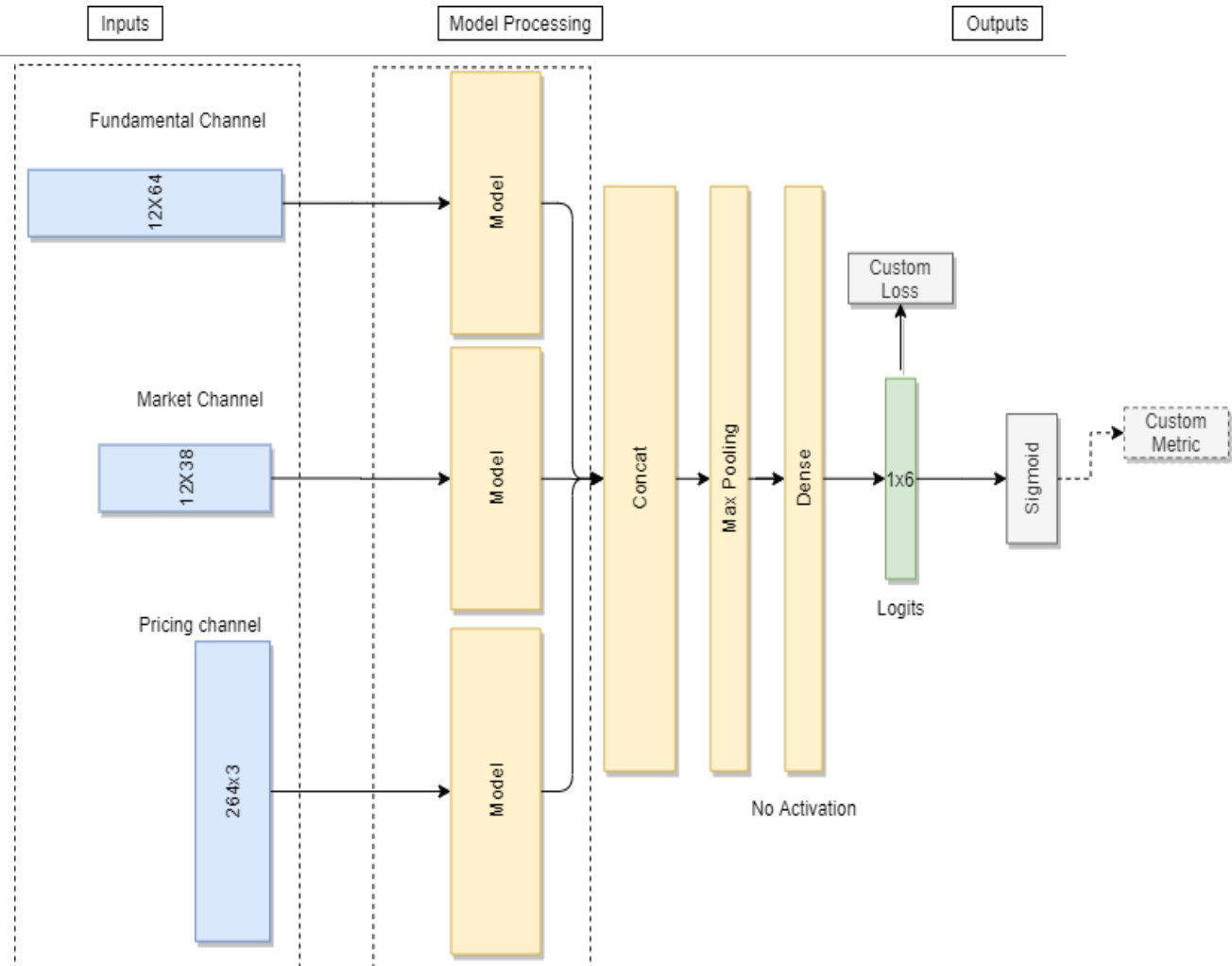
- 30 years of data related to mid-cap companies listed in the US from 1990 to 2020
- Three different data sources
- Wider definition of default



# Model architecture



Transformer Encoder model



Multi-modal architecture

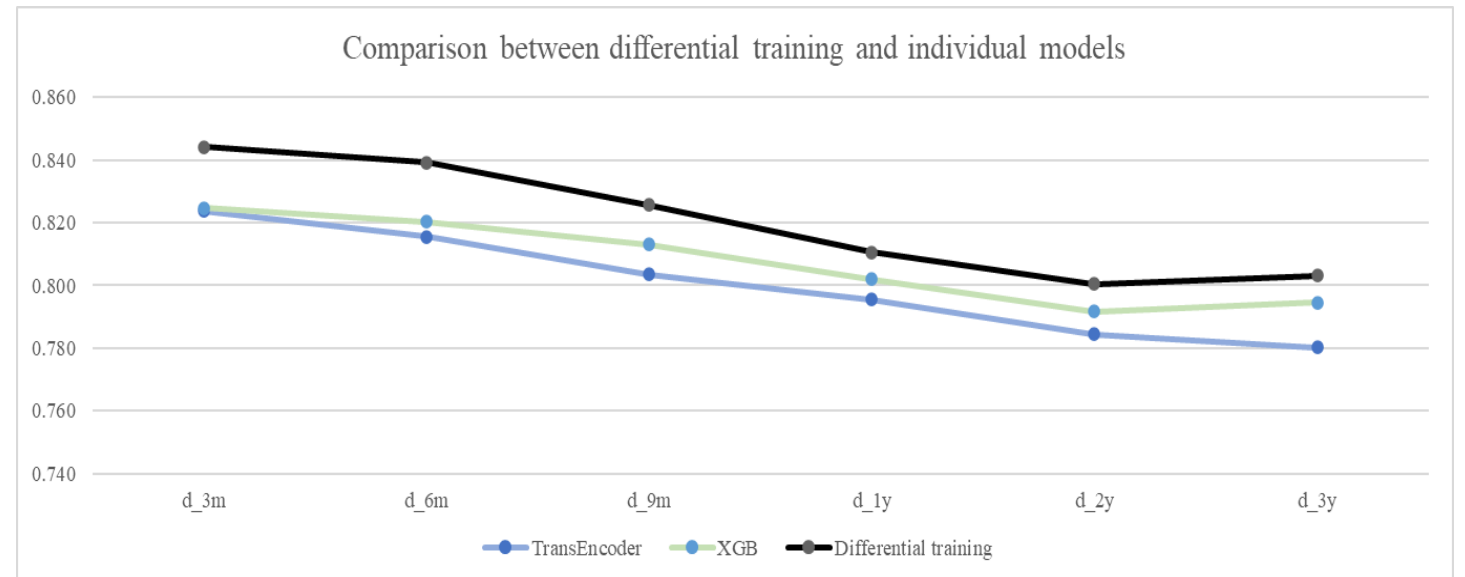
# Results

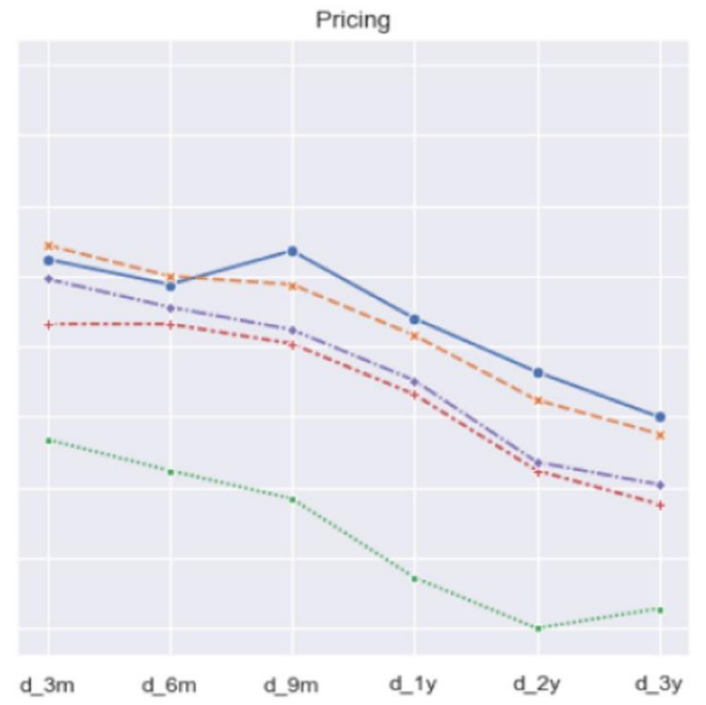
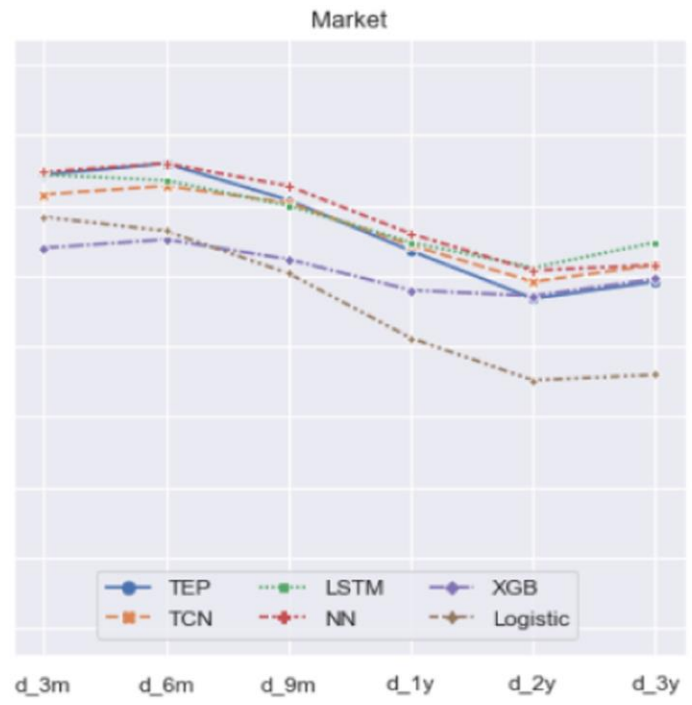
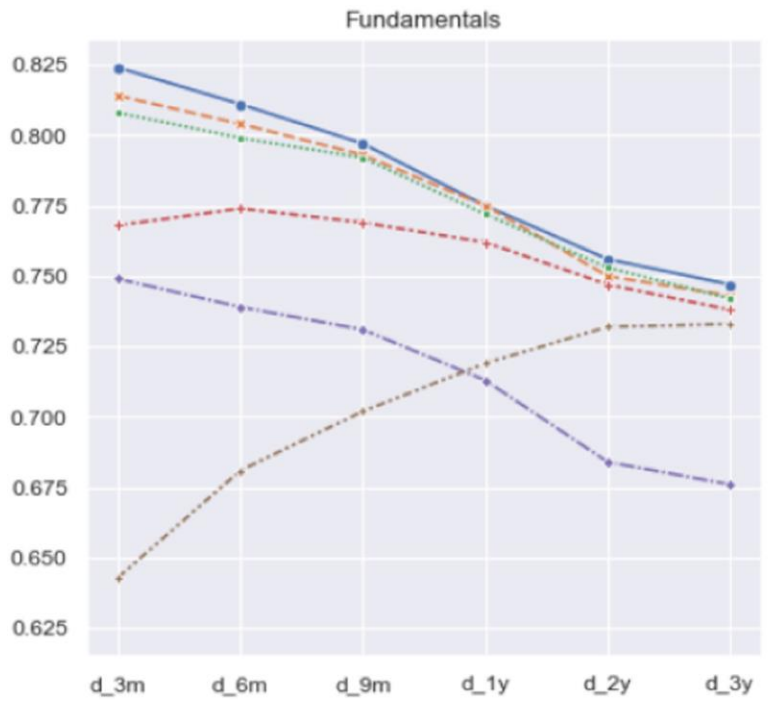
Deep learning models perform better with individual data

**Long-range dependencies** could be found with TransEncoder and TCN as can be seen from daily pricing data channel

With all data, **multi-modal architecture allows deep learning models to outperform XGB**

AUC@ROC Different data sources	Fundamentals only	Market data	Pricing data
TransEncoder	<b>0.785</b>	0.767	<b>0.736</b>
TCN	<b>0.780</b>	0.767	<b>0.731</b>
LSTM	0.777	<b>0.770</b>	0.657
NN	0.756	<b>0.772</b>	0.708
XGB	0.715	0.752	0.715
Logistic	0.702	0.741	0.535





---

*Input: Quarterly and daily data*

*channels*

AUC

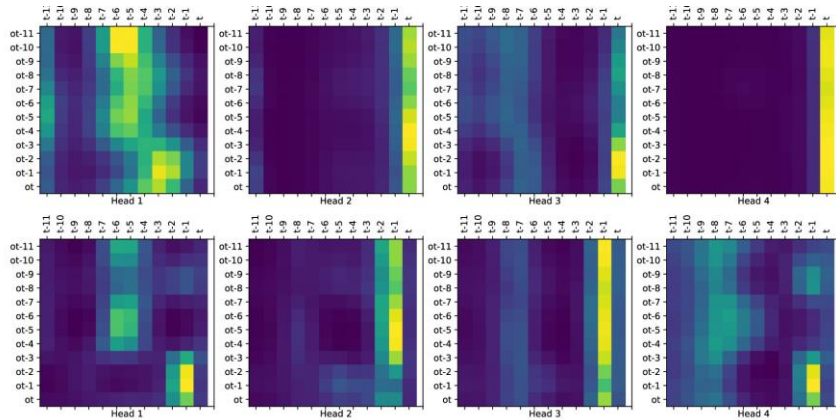
---

Method	Regime	Average	d_3m	d_6m	d_9m	d_1y	d_2y	d_3y
<b>TCN</b>								
Training together	2	0.812	0.829	0.821	0.813	0.808	0.802	0.799
Pricing channel freeze	3	0.817	0.828	0.833	0.822	0.812	0.805	0.802
Market and pricing channel freeze	3	0.821	0.839	0.814	0.820	0.814	0.826	0.812
<b>TEP</b>								
Training together	2	0.835	0.858	0.848	0.843	0.832	0.820	0.812
Pricing channel freeze	3	0.841	0.860	0.852	0.846	0.841	0.824	0.822
Market and pricing channel freeze	3	<b>0.847</b>	0.867	0.860	0.850	0.847	0.833	0.824

---

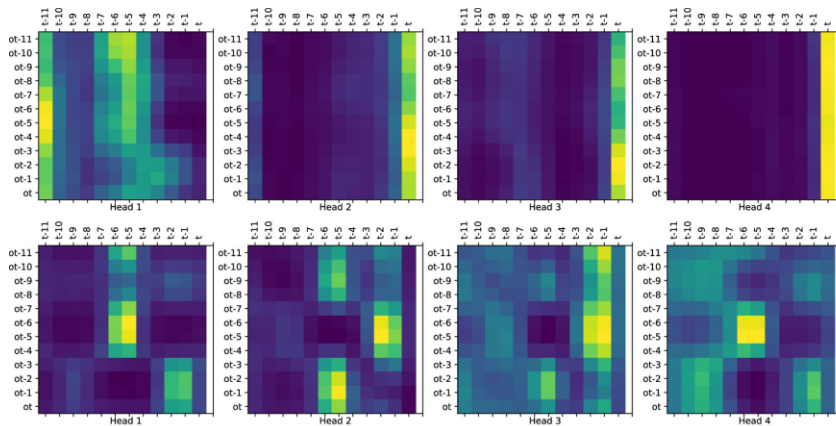
---

# Interpreting the results



(b) Average weights for firms with no observed default

- Difference in learning between the default firms and non-default firms
- Each head focuses on different aspect of the input
- Input last 12 quarters of data mapped to output representation
- Higher weights colored yellow

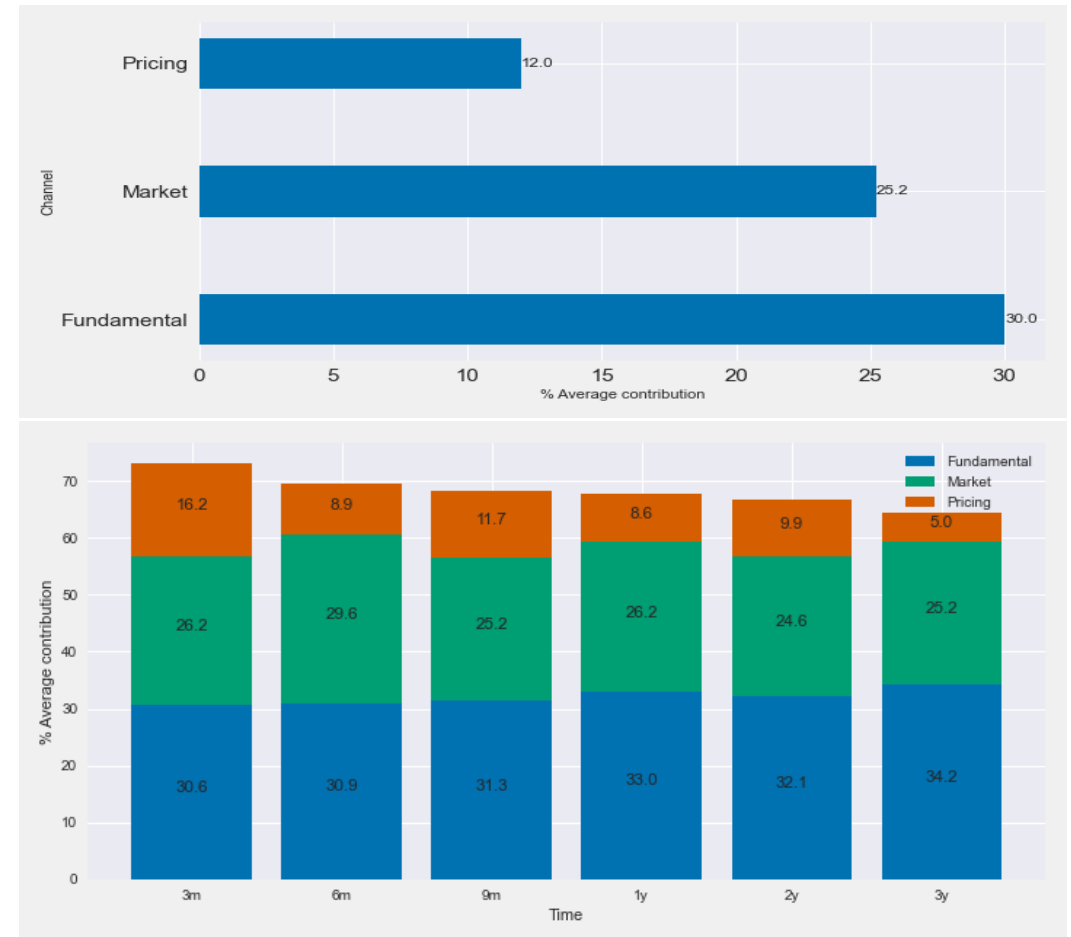


(a) Average weights for firms that default

# Interpretation of the Results - Shapley

- **Accounting information is most important data source for default prediction** in mid-caps accounting for 30% importance
- **Macro economic environment more important over medium term than equity performance of the company**
- **Pricing channel provides signalling in the short term**
- Temporally , present data is more important for prediction over 52% of performance from present accounting information compared to 12.4% from past two years.

	Shapley values	
Channel	Present 1 year	Past 2 years
Fundamental	52.3	12.4
Market	35.1	20.0
Pricing	38.4	9.3



# Conclusion

---

Deep learning models improve predictive power especially with complex models and multimodal architectures

Term structure of probabilities produced within single model by manipulating the objective function

Provide interpretability to the results by using heatmaps and custom methodology for groups of variables based on Shapley values

Could extend models with unstructured data like text and audio data

**Multi modal architecture** could be extended to produce new kind of scorecard models for credit risk

**Read the paper! Korangi et al. (2023) @ EJOR**





SCAN ME



Banking  
Analytics  
Lab



# Thank you!

---

Q&A

# References

---

1. Amato, J.D. and Remolona, E.M., 2003. The credit spread puzzle. *BIS Quarterly Review, December*.
2. Feldhütter, P. and Schaefer, S.M., 2018. The myth of the credit spread puzzle. *The Review of Financial Studies*
3. Jarrow, R.A. and Turnbull, S.M., 2000. The intersection of market and credit risk. *Journal of Banking & Finance*
4. du Jardin, P. and Séverin, E., 2012. Forecasting financial failure using a Kohonen map: A comparative study to improve model stability over time. *European Journal of Operational Research*
5. Altman, E.I., 1968. Financial ratios, discriminant analysis and the prediction of corporate bankruptcy. *The journal of finance, 23(4)*, pp.589-609.
6. Merton, R.C., 1974. On the pricing of corporate debt: The risk structure of interest rates. *The Journal of finance, 29(2)*, pp.449-470.
7. Jarrow, R.A. and Turnbull, S.M., 1995. Pricing derivatives on financial securities subject to credit risk. *The journal of finance, 50(1)*, pp.53-85.
8. Alaka, H.A., Oyedele, L.O., Owolabi, H.A., Kumar, V., Ajayi, S.O., Akinade, O.O. and Bilal, M., 2018. Systematic review of bankruptcy prediction models: Towards a framework for tool selection. *Expert Systems with Applications*
9. Barboza, F., Kimura, H. and Altman, E., 2017. Machine learning models and bankruptcy prediction. *Expert Systems with Applications, 83*, pp.405-417.
10. Mai, F., Tian, S., Lee, C. and Ma, L., 2019. Deep learning models for bankruptcy prediction using textual disclosures. *European journal of operational research, 274(2)*, pp.743-758.
11. Stevenson, M., Mues, C. and Bravo, C., 2021. The value of text for small business default prediction: A deep learning approach. *European Journal of Operational Research*.
12. Vaswani, A., Shazeer, N., Parmar, N., Uszkoreit, J., Jones, L., Gomez, A.N., Kaiser, L. and Polosukhin, I., 2017. Attention is all you need. *arXiv preprint arXiv:1706.03762*.